

quick look

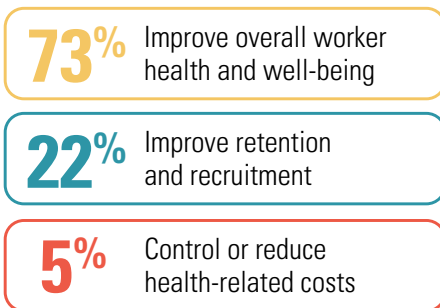
The Importance of Workplace Wellness and Financial Education Programs

The International Foundation of Employee Benefit Plans surveyed members representing corporations/ single employer plans (including nonprofits), multi-employer funds and public employer plans across North America. The key findings from the *Workplace Wellness and Financial Education Programs: 2025 Survey Report* reveal details about current initiatives and insights into the changing needs of employees as well as the growing importance of well-being and financial stability, covering personal factors impacted by financial challenges, the impact on work performance and solutions through financial education. Visit www.ifebp.org/workplacewellness25 for more information and to view the full survey report. Highlights from Canadian survey respondents include the following.

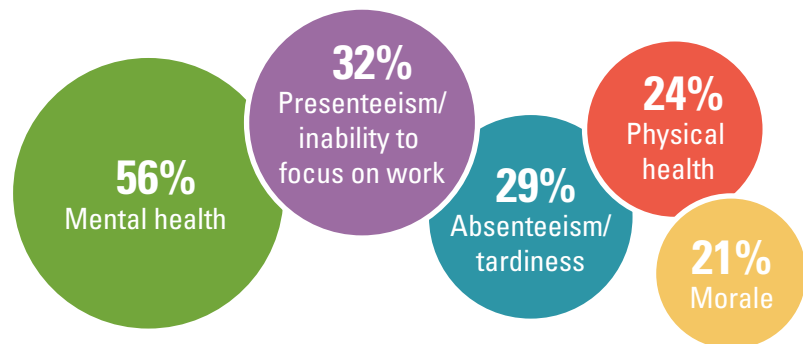
Barriers to Wellness Initiatives



Reasons for Offering Wellness Initiatives



Performance Issues From Workers With Financial Challenges



Employer Goals for Providing Financial Education

